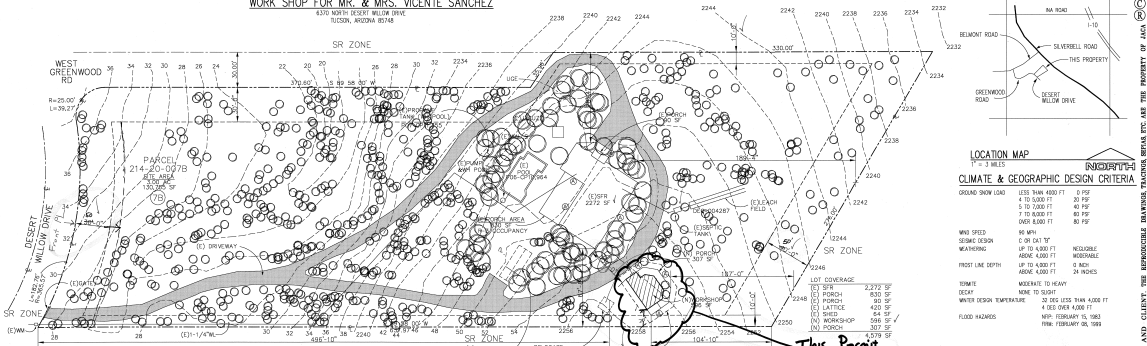


WORK SHOP FOR MR. & MRS. VICENTE SANCHEZ

6510 NORTH DESERT WILLOW DRIVE
TUCSON, ARIZONA 85748



LOCATION MAP
1" = 3 MILES

INDICATOR
CLIMATE & GEOGRAPHIC DESIGN CRITERIA

ORGANIC SNOW LOAD	LESS THAN 4000 FT	0 PSF
	UP TO 4,000 FT	20 PSF
	5 TO 7,000 FT	40 PSF
	7 TO 8,000 FT	60 PSF
	8,000+ FT	80 PSF
WIND SPEED	85 MPH	
SEISMIC DESIGN	0 OR CAT 17	
WEATHERING	UP TO 4,000 FT	NEGLIGIBLE
	Above 4,000 FT	MODERATE
PROFIT LINE DEPTH	UP TO 4,000 FT	2 INCH
	Above 4,000 FT	18 INCHES
TORME	MODERATE TO HEAVY	
DESIGN	NONE TO SLIGHT	
WEATHER TEMPERATURE	30 DEG LESS THAN 4,000 FT	
	4 DEG OVER 4,000 FT	
FLOOD HAZARDS	NONE, FEBRUARY 15, 1983 HIGH FEBRUARY 15, 1983	

This Permit

17'-0" WINDOW SLT HEIGHT 4'4" MAX. WINDOW OPENING 20'0" X 24'0" & THE TOTAL SLD FT. OF THE OPENING MUST BE 3.7 SLD FT.

ECC CALCULATION
THIS PROJECT COMPLY W/ ECC 502.2.4 FOR WINDOWS & DOORS FOR ENERGY CONSERVATION - ENERGY EFFICIENCY - SECT M 1102 BUILDING ENVELOPE.
W/ WINDOW DOUBLE PANE. 5/8" MED. PLAN EXTERIOR DOOR. 2 1/2" MED. PLAN CEILING. R 19
W/ 19" MILLS (9" W)

THE SOLAR HEAT GAIN COEFFICIENT SHD. MIN VALUE OF 0.40 FOR ALL DOORS / WINDOWS PER A 1102.2.1 (R=0.200) (U=0.75 MAX)

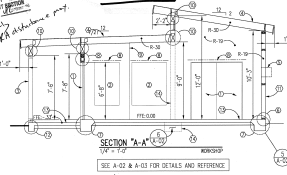
OUTDOOR LIGHTING CODE
6" X 1200 LUMENS (T50) PROVIDED
16,500 LUMENS X 3.00 AC = 49,500 LUMENS
12,000 LUMENS X 3.00 AC = 36,000 LUMENS
120,000 LUMENS

SITE PLAN
1" = 30' - 0"

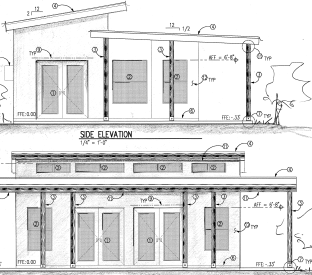
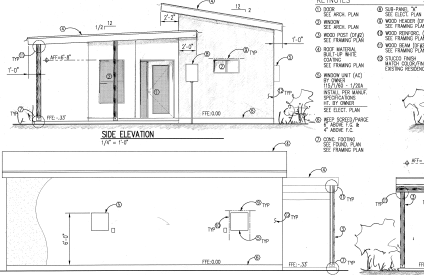
THIS PROJECT WILL COMPLY WITH PIMA COUNTY ORDINANCE AND OUTDOOR LIGHTING CODE - LATEST EDITION

SITE WORK
SHOP DRAWINGS TO BE SUBMITTED TO GENERAL CONTRACTOR AND PROCESSED FOR REVIEW PRIOR TO EXECUTING OR FABRICATING THAT AREA OF WORK.
NO DEVIATION FROM THE APPROVED DRAWINGS SHALL BE PERMITTED WITHOUT THE WRITTEN APPROVAL OF THE OWNER, ARCHITECT AND BUILDING OFFICIAL.
BUILDING LIGHTING SHALL COMPLY W/ AEC & COT LIGHT POLLUTION ORDINANCE.
ALL EXTERIOR LIGHTS TO BE LESS THAN 1000 INCANDESCENT.

G.C./OWNER TO BE AWARE OF EXISTING ELEC. DICES, WATER METER, TEL. BOXES, ETC. & ADJUST AS REQUIRED.
G.C./OWNER IS RESPONSIBLE FOR THE SEQUENCE OF CONSTRUCTION AND ALL MATERIALS, SORTED & IN PLACE. THE G.C./OWNER SHALL BE RESPONSIBLE FOR COORDINATING ALL DRAWINGS OF THE CONTRACT DOCUMENTS.



- KEY NOTES
- 1. SEE FRAMING PLAN
 - 2. SEE FRAMING PLAN
 - 3. SEE FRAMING PLAN
 - 4. SEE FRAMING PLAN
 - 5. SEE FRAMING PLAN
 - 6. SEE FRAMING PLAN
 - 7. SEE FRAMING PLAN
 - 8. SEE FRAMING PLAN
 - 9. SEE FRAMING PLAN
 - 10. SEE FRAMING PLAN
 - 11. SEE FRAMING PLAN
 - 12. SEE FRAMING PLAN
 - 13. SEE FRAMING PLAN
 - 14. SEE FRAMING PLAN
 - 15. SEE FRAMING PLAN
 - 16. SEE FRAMING PLAN
 - 17. SEE FRAMING PLAN
 - 18. SEE FRAMING PLAN
 - 19. SEE FRAMING PLAN
 - 20. SEE FRAMING PLAN
 - 21. SEE FRAMING PLAN
 - 22. SEE FRAMING PLAN
 - 23. SEE FRAMING PLAN
 - 24. SEE FRAMING PLAN
 - 25. SEE FRAMING PLAN
 - 26. SEE FRAMING PLAN
 - 27. SEE FRAMING PLAN
 - 28. SEE FRAMING PLAN
 - 29. SEE FRAMING PLAN
 - 30. SEE FRAMING PLAN
 - 31. SEE FRAMING PLAN
 - 32. SEE FRAMING PLAN
 - 33. SEE FRAMING PLAN
 - 34. SEE FRAMING PLAN
 - 35. SEE FRAMING PLAN
 - 36. SEE FRAMING PLAN
 - 37. SEE FRAMING PLAN
 - 38. SEE FRAMING PLAN
 - 39. SEE FRAMING PLAN
 - 40. SEE FRAMING PLAN
 - 41. SEE FRAMING PLAN
 - 42. SEE FRAMING PLAN
 - 43. SEE FRAMING PLAN
 - 44. SEE FRAMING PLAN
 - 45. SEE FRAMING PLAN
 - 46. SEE FRAMING PLAN
 - 47. SEE FRAMING PLAN
 - 48. SEE FRAMING PLAN
 - 49. SEE FRAMING PLAN
 - 50. SEE FRAMING PLAN
 - 51. SEE FRAMING PLAN
 - 52. SEE FRAMING PLAN
 - 53. SEE FRAMING PLAN
 - 54. SEE FRAMING PLAN
 - 55. SEE FRAMING PLAN
 - 56. SEE FRAMING PLAN
 - 57. SEE FRAMING PLAN
 - 58. SEE FRAMING PLAN
 - 59. SEE FRAMING PLAN
 - 60. SEE FRAMING PLAN
 - 61. SEE FRAMING PLAN
 - 62. SEE FRAMING PLAN
 - 63. SEE FRAMING PLAN
 - 64. SEE FRAMING PLAN
 - 65. SEE FRAMING PLAN
 - 66. SEE FRAMING PLAN
 - 67. SEE FRAMING PLAN
 - 68. SEE FRAMING PLAN
 - 69. SEE FRAMING PLAN
 - 70. SEE FRAMING PLAN
 - 71. SEE FRAMING PLAN
 - 72. SEE FRAMING PLAN
 - 73. SEE FRAMING PLAN
 - 74. SEE FRAMING PLAN
 - 75. SEE FRAMING PLAN
 - 76. SEE FRAMING PLAN
 - 77. SEE FRAMING PLAN
 - 78. SEE FRAMING PLAN
 - 79. SEE FRAMING PLAN
 - 80. SEE FRAMING PLAN
 - 81. SEE FRAMING PLAN
 - 82. SEE FRAMING PLAN
 - 83. SEE FRAMING PLAN
 - 84. SEE FRAMING PLAN
 - 85. SEE FRAMING PLAN
 - 86. SEE FRAMING PLAN
 - 87. SEE FRAMING PLAN
 - 88. SEE FRAMING PLAN
 - 89. SEE FRAMING PLAN
 - 90. SEE FRAMING PLAN
 - 91. SEE FRAMING PLAN
 - 92. SEE FRAMING PLAN
 - 93. SEE FRAMING PLAN
 - 94. SEE FRAMING PLAN
 - 95. SEE FRAMING PLAN
 - 96. SEE FRAMING PLAN
 - 97. SEE FRAMING PLAN
 - 98. SEE FRAMING PLAN
 - 99. SEE FRAMING PLAN
 - 100. SEE FRAMING PLAN



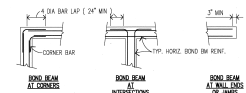
GENERAL NOTES:
ALL WORK SHALL CONFORM WITH REQUIREMENT OF THE LOCAL COMMERCIAL BUILDING CODE, LOCAL ZONING CODE, NATIONAL ELECTRIC CODE, & P.F.A. (P.A. AND ALL OTHER APPLICABLE CODES, RULES AND REGULATIONS ALL IN THEIR LATEST EDITION OF ALL AUTHORITIES HAVING JURISDICTION OVER WORK OF THIS TYPE. THE G.C./OWNER TO COMPLY WITH THESE REGULATIONS.
THE G.C./OWNER SHALL SUPERVISE AND DIRECT THE WORK, USING THEIR BEST SKILL AND ATTENTION. THE G.C./OWNER SHALL BE SOLELY RESPONSIBLE FOR THE CONSTRUCTION METHODS, TECHNIQUES, SEQUENCES AND PROCEDURES AND FOR COORDINATING ALL PORTIONS OF THE WORK UNDER THE CONTRACT. THE G.C./OWNER SHALL EMPLOY A COMPETENT SUPERVISOR WHO SHALL BE IN ATTENDANCE AT THE PROJECT SITE DURING THE PROGRESS OF THE WORK. THE SUPERVISOR SHALL REPRESENT THE CONTRACTOR AND ALL COMMUNICATIONS TO THE SUPERVISOR SHALL BE AS BEING AS IF DONE BY THE G.C./OWNER.
THE G.C./OWNER SHALL FAMILIARIZE HIMSELF WITH THE PROJECT THROUGH INSPECTION OF THE SITE. THE DRAWINGS AND SPECIFICATIONS SHD AS TO THOROUGHLY UNDERSTAND THE WORK AND ALL DISCREPANCIES AND OMISSIONS SHALL BE REPORTED AND CLARIFICATION OBTAINED FROM THE ARCHITECT PRIOR TO THE WORK BEING DONE. ANY WORK THAT PRECEEDS OTHERWISE SHALL BE, IF NECESSARILY PERFORMED, NOTICED BY REPAIRING WITH THE COST FOR SAME BEING BORNE BY THE CONTRACTOR. THE G.C./OWNER SHALL NOTIFY ALL SURROUNDING FOR COORDINATION.

ADDITIONAL NOTES:
DRAWING INDEX:
A-1: SEE FRAMING PLAN
A-2: SEE FRAMING PLAN
A-3: SEE FRAMING PLAN
A-4: SEE FRAMING PLAN
A-5: SEE FRAMING PLAN
A-6: SEE FRAMING PLAN
A-7: SEE FRAMING PLAN
A-8: SEE FRAMING PLAN
A-9: SEE FRAMING PLAN
A-10: SEE FRAMING PLAN
A-11: SEE FRAMING PLAN
A-12: SEE FRAMING PLAN
A-13: SEE FRAMING PLAN
A-14: SEE FRAMING PLAN
A-15: SEE FRAMING PLAN
A-16: SEE FRAMING PLAN
A-17: SEE FRAMING PLAN
A-18: SEE FRAMING PLAN
A-19: SEE FRAMING PLAN
A-20: SEE FRAMING PLAN
A-21: SEE FRAMING PLAN
A-22: SEE FRAMING PLAN
A-23: SEE FRAMING PLAN
A-24: SEE FRAMING PLAN
A-25: SEE FRAMING PLAN
A-26: SEE FRAMING PLAN
A-27: SEE FRAMING PLAN
A-28: SEE FRAMING PLAN
A-29: SEE FRAMING PLAN
A-30: SEE FRAMING PLAN
A-31: SEE FRAMING PLAN
A-32: SEE FRAMING PLAN
A-33: SEE FRAMING PLAN
A-34: SEE FRAMING PLAN
A-35: SEE FRAMING PLAN
A-36: SEE FRAMING PLAN
A-37: SEE FRAMING PLAN
A-38: SEE FRAMING PLAN
A-39: SEE FRAMING PLAN
A-40: SEE FRAMING PLAN
A-41: SEE FRAMING PLAN
A-42: SEE FRAMING PLAN
A-43: SEE FRAMING PLAN
A-44: SEE FRAMING PLAN
A-45: SEE FRAMING PLAN
A-46: SEE FRAMING PLAN
A-47: SEE FRAMING PLAN
A-48: SEE FRAMING PLAN
A-49: SEE FRAMING PLAN
A-50: SEE FRAMING PLAN
A-51: SEE FRAMING PLAN
A-52: SEE FRAMING PLAN
A-53: SEE FRAMING PLAN
A-54: SEE FRAMING PLAN
A-55: SEE FRAMING PLAN
A-56: SEE FRAMING PLAN
A-57: SEE FRAMING PLAN
A-58: SEE FRAMING PLAN
A-59: SEE FRAMING PLAN
A-60: SEE FRAMING PLAN
A-61: SEE FRAMING PLAN
A-62: SEE FRAMING PLAN
A-63: SEE FRAMING PLAN
A-64: SEE FRAMING PLAN
A-65: SEE FRAMING PLAN
A-66: SEE FRAMING PLAN
A-67: SEE FRAMING PLAN
A-68: SEE FRAMING PLAN
A-69: SEE FRAMING PLAN
A-70: SEE FRAMING PLAN
A-71: SEE FRAMING PLAN
A-72: SEE FRAMING PLAN
A-73: SEE FRAMING PLAN
A-74: SEE FRAMING PLAN
A-75: SEE FRAMING PLAN
A-76: SEE FRAMING PLAN
A-77: SEE FRAMING PLAN
A-78: SEE FRAMING PLAN
A-79: SEE FRAMING PLAN
A-80: SEE FRAMING PLAN
A-81: SEE FRAMING PLAN
A-82: SEE FRAMING PLAN
A-83: SEE FRAMING PLAN
A-84: SEE FRAMING PLAN
A-85: SEE FRAMING PLAN
A-86: SEE FRAMING PLAN
A-87: SEE FRAMING PLAN
A-88: SEE FRAMING PLAN
A-89: SEE FRAMING PLAN
A-90: SEE FRAMING PLAN
A-91: SEE FRAMING PLAN
A-92: SEE FRAMING PLAN
A-93: SEE FRAMING PLAN
A-94: SEE FRAMING PLAN
A-95: SEE FRAMING PLAN
A-96: SEE FRAMING PLAN
A-97: SEE FRAMING PLAN
A-98: SEE FRAMING PLAN
A-99: SEE FRAMING PLAN
A-100: SEE FRAMING PLAN

214-20-0678
GENERAL CONTRACTOR
SANCHEZ Y VANCE & ASSOCIATES
214-20-0678
1001 N. WILLOW BLVD. SUITE 100
TUCSON, ARIZONA 85716
OWNER BY
J.A. DESIGN, L.L.C.
CREATING SERVICES
www.jadesignllc.com
CELL: 520-281-1143 FAX: 520-281-0300
P.O. BOX 10000 TUCSON, ARIZONA 85710
PROJECT NO. 214-20-0678
SHEET NO. A-01
OF A-01

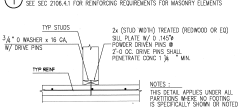
Do not writing after this and do not
1-800-763-5366
Blue Print Center

THESE DOCUMENTS ARE TO BE USED ONLY FOR THE ADDRESSED SITE PER CONTRACT BETWEEN JACA AND CLIENT. THE REPRODUCIBLE DRAWINGS, TRACES, ETC. ARE THE PROPERTY OF JACA
 Applicant Copy
 P11C/P01487
 Applicant Copy



1 FOUND TIES & JUNCTURES

SEE SEC 2100.4 FOR REINFORCING REQUIREMENTS FOR MASONRY ELEMENTS



2 INTERIOR NON-BEARING PARTITION SILL PLATE ANCHOR



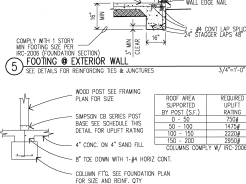
3 TOP DOWN - DETAIL



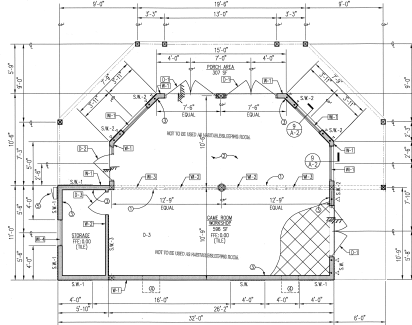
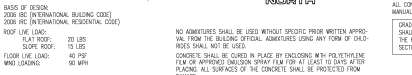
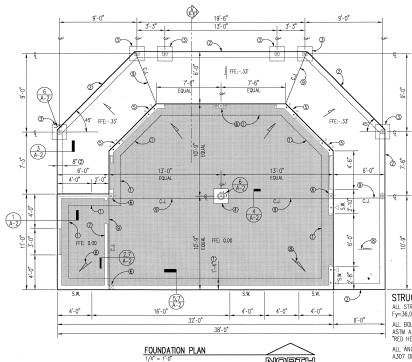
4 CONCRETE CONTROL JOINTS



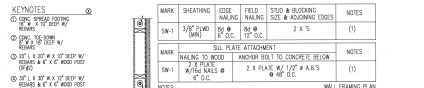
5 FOOTING & EXTERIOR WALL



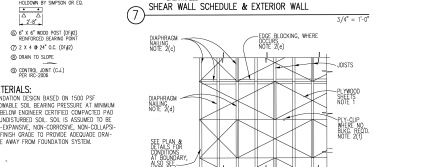
6 COLUMN FTG. DETAIL



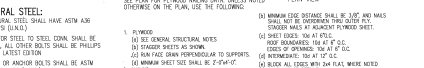
ARCH FLOOR PLAN



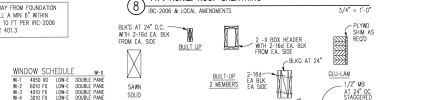
7 SHEAR WALL SCHEDULE & EXTERIOR WALL



8 TYP. HORIZ. ROOF SHEATHING



9 HEADER & BEARING WALLS



WINDOW SCHEDULE

NO.	TYPE	FINISH	REMARKS
1	6" x 6"	WOOD	WOOD
2	8" x 8"	WOOD	WOOD
3	10" x 10"	WOOD	WOOD
4	12" x 12"	WOOD	WOOD

DOOR SCHEDULE

NO.	TYPE	FINISH	REMARKS
1	6" x 6"	WOOD	WOOD
2	8" x 8"	WOOD	WOOD
3	10" x 10"	WOOD	WOOD
4	12" x 12"	WOOD	WOOD

WOOD HEADER DETAILS

- FOR STUD WALL FINISHING SEE PLAN AND DETAILS
- SPACING STUDS SHALL BE UNIFORM
- HEADERS ARE CALLED OUT ON PLANS
- SEE SHEET WALL DETAIL FOR STUD REQUIREMENTS
- CONTROL STUDS ON POSTS TO FLOOR TOP IN ANCHOR TO SUPPORT JACO STUDS ON POSTS ABOVE INTERIOR COLUMNS

KEYNOTES:

- 1/2" x 1/2" x 1/2" (P-2) (P-2)
- 1/2" x 1/2" x 1/2" (P-2) (P-2)
- 1/2" x 1/2" x 1/2" (P-2) (P-2)
- 1/2" x 1/2" x 1/2" (P-2) (P-2)
- 1/2" x 1/2" x 1/2" (P-2) (P-2)

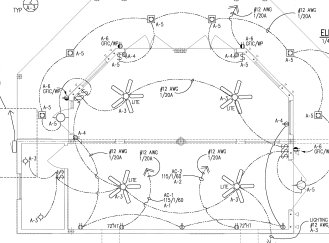
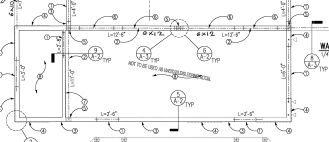
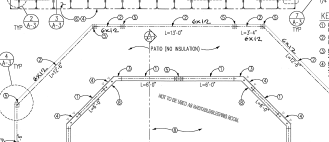
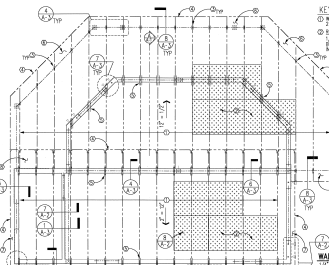
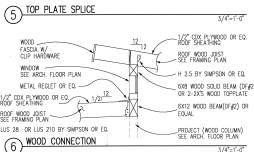
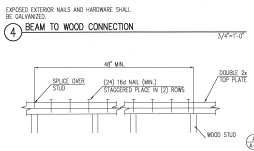
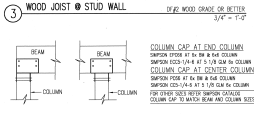
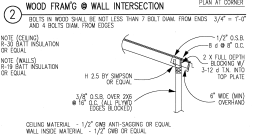
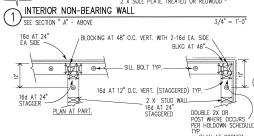
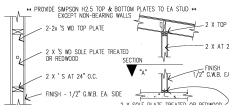
CONCRETE:

- ALL CONCRETE CONSTRUCTION SHALL CONFORM TO IRC-2006
- CONCRETE HAS BEEN DESIGNED ACCORDING TO ACI 318-05 WITH THE FOLLOWING:
- 1. FRESH CONCRETE: 3800 PSI (28 DAYS)
- 2. CURING: QUARTERS, STAPES ON GRADE
- 3. FORMS: CURERS AND SEAL WELLS
- CONCRETE SHALL BE PROPORTIONED ACCORDING TO THEIR REQUIREMENTS
- MIN. THICKNESS OF ALL JIBS OR WELLS FOR THE STRUCTURE DESIGN METHOD: AGGREGATE SIZE IS 1.0 INCHES MAXIMUM FOR FOOTINGS. OTHER MASS CONCRETE SHALL HAVE MAXIMUM AGGREGATE SIZE OF 1/4 INCH. CEMENT SHALL CONFORM TO C150. AGGREGATE ACCORDING TO C33 AND SHALL BE IN PLACE.

THIS DOCUMENT IS THE PROPERTY OF JACO DESIGN LLC. IT IS NOT TO BE REPRODUCED, COPIED, OR TRANSMITTED IN ANY FORM OR BY ANY MEANS, ELECTRONIC OR MECHANICAL, INCLUDING PHOTOCOPYING, RECORDING, BY ANY INFORMATION STORAGE AND RETRIEVAL SYSTEM, OR BY ANY INFORMATION TRANSMISSION METHOD, WITHOUT THE WRITTEN PERMISSION OF JACO DESIGN LLC.

JACO DESIGN LLC
 1300 N. 19TH AVENUE, SUITE 200
 PHOENIX, AZ 85016
 (602) 991-1111
 WWW.JACODSIGN.COM

DRAWING INDEX
 A-41 BULK PLAN
 A-42 BULK ELEVATIONS
 A-43 FOUNDATION PLAN
 A-44 WALL PLAN
 A-45 ROOF FINISHING
 A-46 SECTION B-1
 A-47 SECTION B-2
 A-48 SECTION B-3
 A-49 SECTION B-4
 A-50 SECTION B-5
 A-51 SECTION B-6
 A-52 SECTION B-7
 A-53 SECTION B-8
 A-54 SECTION B-9
 A-55 SECTION B-10
 A-56 SECTION B-11
 A-57 SECTION B-12
 A-58 SECTION B-13
 A-59 SECTION B-14
 A-60 SECTION B-15
 A-61 SECTION B-16
 A-62 SECTION B-17
 A-63 SECTION B-18
 A-64 SECTION B-19
 A-65 SECTION B-20
 A-66 SECTION B-21
 A-67 SECTION B-22
 A-68 SECTION B-23
 A-69 SECTION B-24
 A-70 SECTION B-25
 A-71 SECTION B-26
 A-72 SECTION B-27
 A-73 SECTION B-28
 A-74 SECTION B-29
 A-75 SECTION B-30
 A-76 SECTION B-31
 A-77 SECTION B-32
 A-78 SECTION B-33
 A-79 SECTION B-34
 A-80 SECTION B-35
 A-81 SECTION B-36
 A-82 SECTION B-37
 A-83 SECTION B-38
 A-84 SECTION B-39
 A-85 SECTION B-40
 A-86 SECTION B-41
 A-87 SECTION B-42
 A-88 SECTION B-43
 A-89 SECTION B-44
 A-90 SECTION B-45
 A-91 SECTION B-46
 A-92 SECTION B-47
 A-93 SECTION B-48
 A-94 SECTION B-49
 A-95 SECTION B-50
 A-96 SECTION B-51
 A-97 SECTION B-52
 A-98 SECTION B-53
 A-99 SECTION B-54
 A-100 SECTION B-55



- KEYNOTES:**
- 1. 1/2\"/>

ROUGH HARDWARE:
 1. 2x4 STUDS AND 2x4 STUDS OR BETTER, SPOKE AS TO NEW TRUSS OR OLD TRUSS. FOR 16\"/>

WOOD AND LUMBER PRODUCTS:
 ALL WOOD CONTRACTS SHALL COMPLY WITH INTERNATIONAL RESIDENTIAL CODE BOOK (IRC) FOR LUMBER & 2 ALL OTHER LUMBER, LAMBER SHALL COMPLY WITH THE APPLICABLE SPECIFICATIONS AS PUBLISHED IN THE CURRENT EDITION OF THE N.C.C.R.A. MANUAL AND ALL TYPES OF LUMBER IN PLACE SHALL BE OF APPROX. STAMP OF THE LUMBER...

WOOD AND LUMBER PRODUCTS:

- 1. 1/2\"/>

WOOD AND LUMBER PRODUCTS:

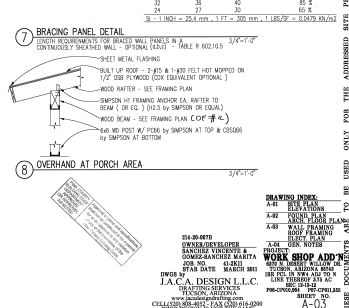
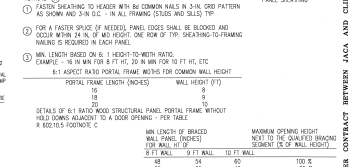
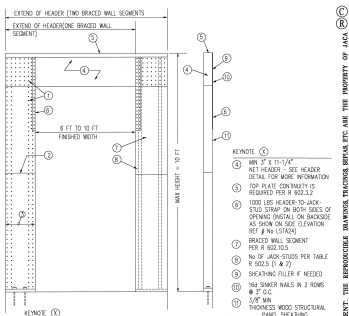
- 1. 1/2\"/>

ELECTRICAL/MECHANICAL PLAN
 1/4\"/>

ELECTRICAL CALCULATION

EXISTING RESIDENCE LOAD

- 1. LIGHTING
- 2. RECEPTACLES
- 3. MOTOR LOADS



DRAWING INDEX

- 4-01 FLS. APPROX.
- 4-02 WALL FRAMING
- 4-03 WALL FRAMING
- 4-04 ROOF FRAMING
- 4-05 ELECTRICAL
- 4-06 MECHANICAL

7-01 WORK SHOP ADDS

J.A.C. DESIGN, L.L.C.

1101 S. HIGHWAY 108, SUITE 100
 FAYETTEVILLE, NC 27033



Mike

WHEELER COMPANY

WHEELER COMPANY



NO. 1
30
SPACED
DOWN
THIS
SIDE
APA

B

NO. 1

30

SPACED
DOWN
THIS
SIDE
APA

NO. 1

30

SPACED
DOWN
THIS
SIDE
APA

WHEELHELD STABBY CON

1-5849

















